



nexthardware.com

a cura di: **Walter Meister - stoner - 01-03-2010 09:35**

## Zotac H55-ITX

# ZOTAC

**LINK (<https://www.nexthardware.com/news/schede-madri/1986/zotac-h55-itx.htm>)**

Recensione della scheda mini-ITX di Zotac

Il sito anandtech.com ha recensito la scheda Zotac in formato mini-ITX H55-ITX.

Rispetto alle soluzioni mini-ITX sul mercato basate sul NVIDIA's GeForce 9300 e sul chipsets ION questa H55-ITX dispone di un chipset Intel H55 Express abbinato ad un socket LGA-1156 offrendo quindi il supporto alle CPU Intel Core i3, i5 e i7.

La scheda quindi offre due opzioni, quella di utilizzarla in un sistema a basso consumo affiancando alla scheda grafica integrata una cpu i3 oppure utilizzare un processore piu' prestante abbinata ad una scheda grafica di fascia media (nei test è stata utilizzata una ATI 5770):

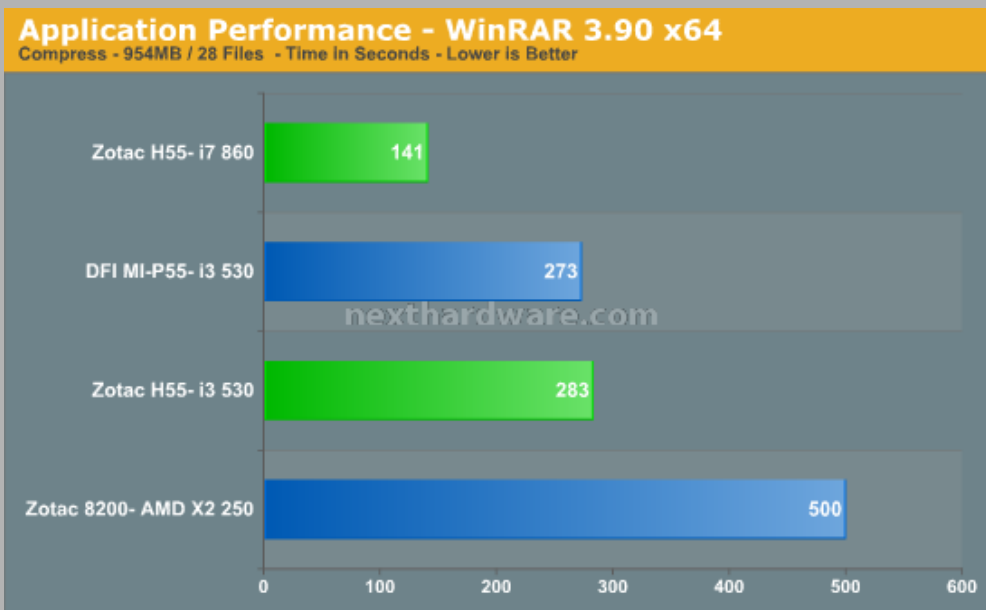
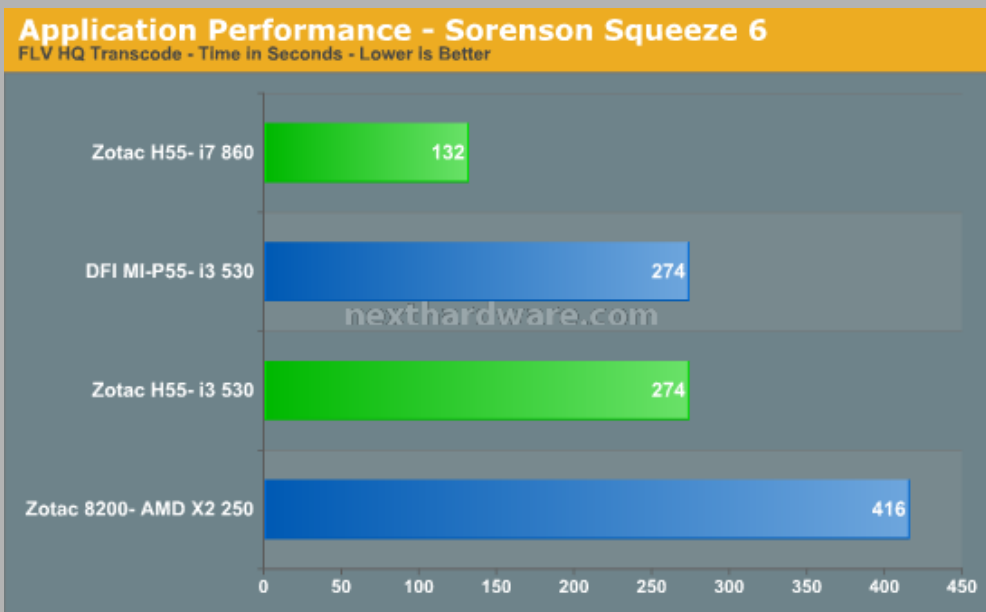
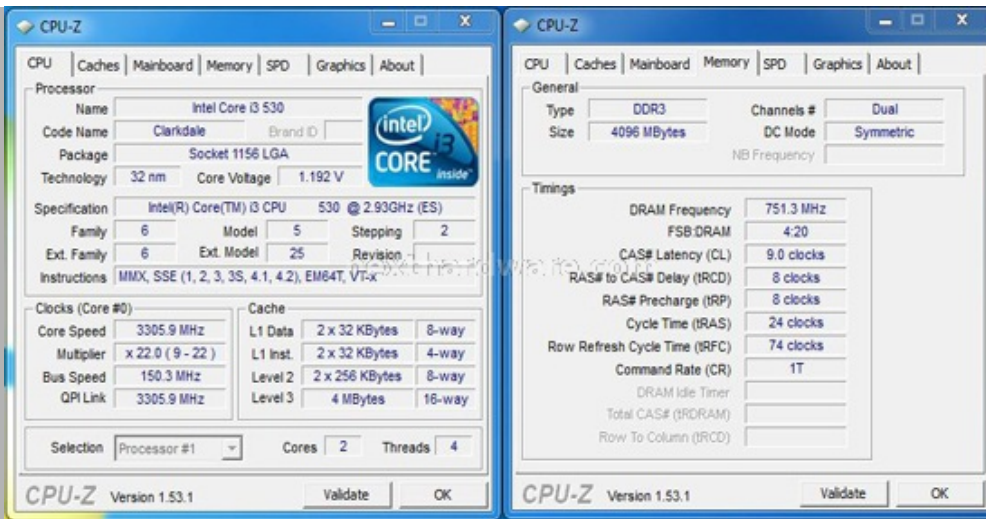
La motherboard offre uno slot PCI Express x16 ed un Mini PCI Express occupato dal modulo WiFi, un audio multicanale 7.1 gestito da un Realtek ALC885, 10 porte USB 2.0, uscita ottica digitale S/PDIF, sei porte SATA da 3.0GB/s ed una porta eSATA.

La scheda è disponibile ad un prezzo di 150\$ circa.



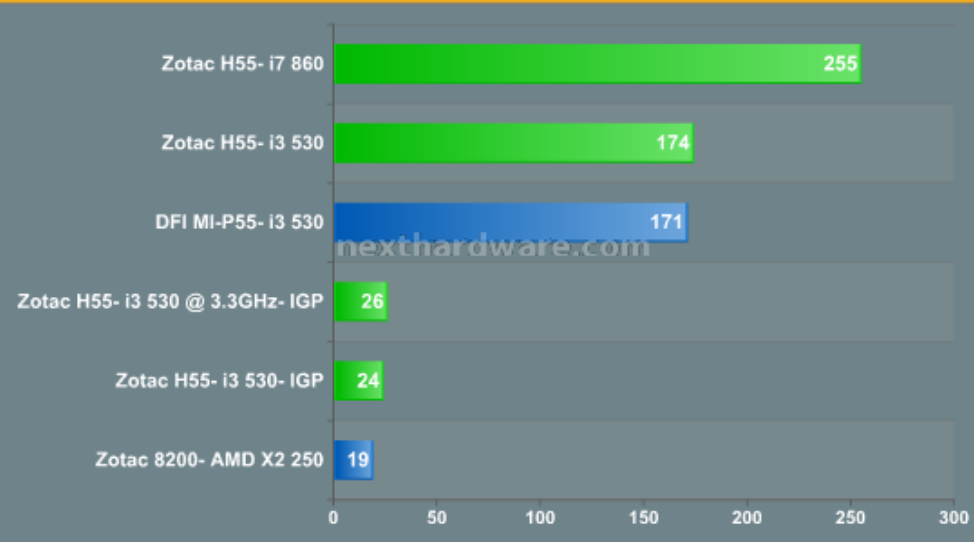


Zotac H55ITX-A-E	
<b>Market Segment:</b>	H55 General Use/HTPC
<b>CPU Interface:</b>	LGA-1156
<b>CPU Support:</b>	LGA-1156 i3/i5/i7 Series of Processors
<b>Chipset:</b>	Intel H55 Express Chipset
<b>BCLK Speeds</b>	100-500MHz in 1MHz increments
<b>DDR3 Memory Speed:</b>	1067, 1333 Frequency Ratios
<b>Uncore Frequency</b>	Fixed at 16x or 18x according to CPU model class
<b>Core Voltage:</b>	1V ~ 2V in 0.0125V increments
<b>CPU Vdroop Compensation:</b>	N/A
<b>CPU Clock Multiplier:</b>	Dependent on Processor, all available multipliers supported
<b>DRAM Voltage: DDR3</b>	Auto, 1.20V ~ 2.60V in 0.1V ~ 0.02V increments (1.50V base)
<b>DRAM Timing Control:</b>	tCL, tRCD, tRP, tRAS, + 9 Additional Timings
<b>DRAM Command Rate:</b>	Auto, 1N, 2N & 3N
<b>PCH Voltage:</b>	Auto, 1.05V ~ 1.35V in .15V increments, 1.05V Base
<b>CPU VTT (Uncore) Voltage:</b>	CPU Default ~ +0.697V in 0.05V ~ 0.06V increments
<b>CPU PLL Voltage:</b>	1.8V ~ 2.1V in 0.1V increments, 1.80V Base
<b>Memory Slots:</b>	Two 240-pin DDR3 DIMM Slots Dual-Channel Configuration Regular Unbuffered DDR3 Memory to 8GB Total
<b>Expansion Slots:</b>	1X PCIe 16X Slot, 1X Mini-PCIe (M.2) Slot
<b>Onboard SATA/RAID:</b>	6x SATA 3.0Gbps Ports - Intel Chipset Hot Plug and NCQ Support
<b>Onboard USB 2.0:</b>	10 USB 2.0 ports on I/O Panel, 4 via header
<b>Onboard LAN:</b>	Intel 82578DC X1 (PCI/e) and AzureWare Wireless-N module
<b>Onboard Audio:</b>	Realtek ALC885 High Definition Audio Codec, 7.1 Channel
<b>Power Connectors:</b>	ATX 24-pin, 4-pin EPS 12V
<b>I/O Panel:</b>	1 x PS/2 Keyboard 1 x RJ45 10 x USB 2.0/1.1 (1 X eSATA combo) 1X Coaxial S/PDIF 1X HDMI 1X VGA 1XDVI 5 Audio I/O jacks
<b>Fan Headers:</b>	1 CPU + 1 Additional Header
<b>Fan Control:</b>	Full temp/speed fan control for both headers via BIOS or OS software.
<b>Package Contents:</b>	SATA Cable X3, 4-pin ATX extension cable X1, I/O Panel X1, 1X User Manual, Driver DVD X1, WiFi Antennas X2 panel I/O.
<b>BIOS Revisions Used:</b>	P55MIB02
<b>Warranty</b>	Limited lifetime warranty (location dependent)



## Gaming Performance - Batman - Arkham Asylum

1280X800 Bench - Low Detail



## Gaming Performance - Crysis

1280X800 Bench - Low Detail

